

Switchgear type BPP2-2S3/R for rated voltage 500V



Through connection block type BPP2-2S3/R is a device designed for use in underground mining pits in non-explosive coal dust conditions and on the ground

Through connection block type BPP2-2S3/R is designed for connecting and distributing power in mine distribution three-phase grid with insulated star point on the transformer (system IT) for rated power grid voltage of 500V., in manually turning-on backup supply (supply 2) after basic supply decay (supply 1).

Wires are connected to the block via clamps through cable glands

TECHNICAL DATA:

ingress protection	IP54
insulation rated voltage of main circuits	660 V
rated power supply voltage	3x500V,50Hz,IT grid
rated current of the outlet	315A
dimensions	650 x 900 x 400mm (height x width x depth)
weight	60 kg

CONSTRUCTION

The through connection block is composed of a housing mounted a frame construction, equipped with brackets. The frame construction allows the device to be hung on the pit wall.

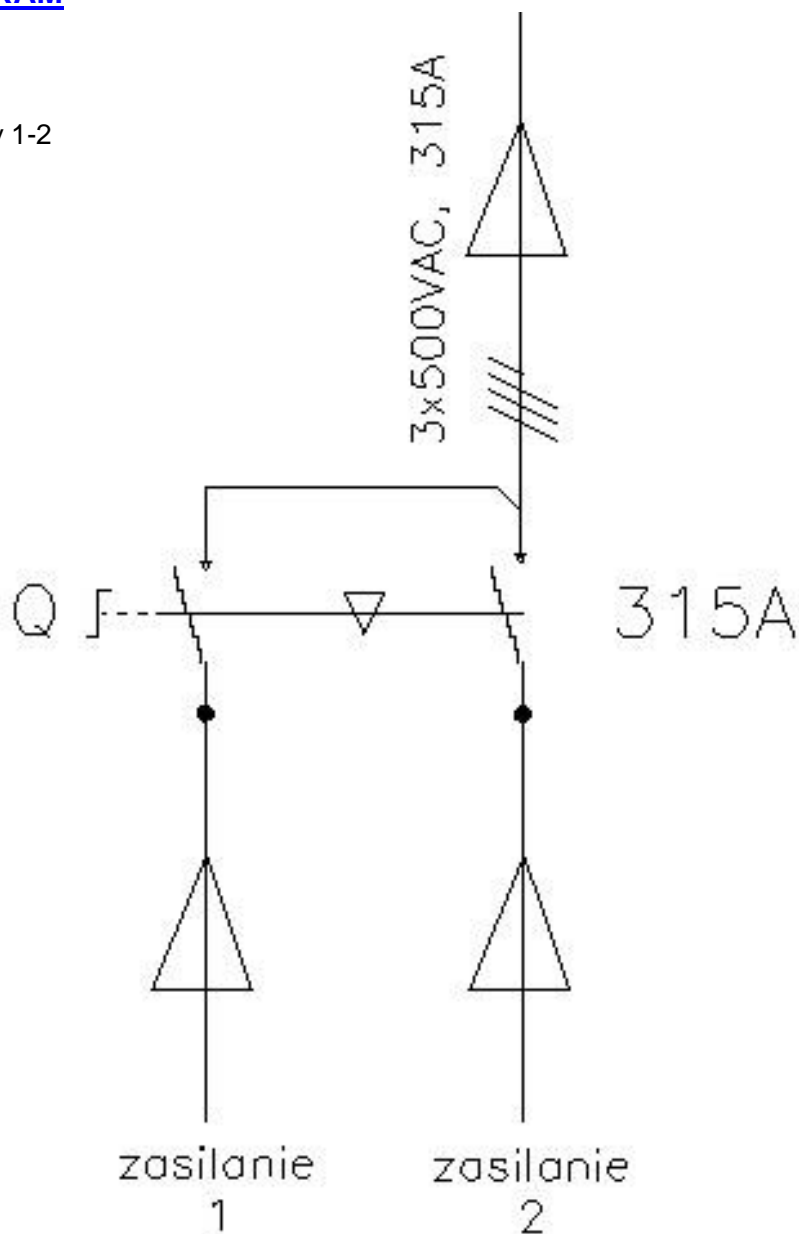
MODE OF OPERATION

Turning-on 500 voltage is carried out through moving drive lever of switch Q in turning-on basic or backup supply position. Every position of the switch can be locked by putting a lock on the switches drive lever.

SCHEMATIC DIAGRAM

Legend:

Zasilanie 1,2 - supply 1-2



Orders should be submitted in writing or by fax to the address:

 **Instal-Service PL**

Spółka z ograniczoną odpowiedzialnością
Spółka komandytowa

58-506 Jelenia Góra, ul. Wrocławska 15a
tel. (+48 075) 64-57-950
fax. (+48 075) 64-57-951
e-mai: instal@instal-service.pl